

# Human BAFFR/TNFRSF13C Protein

Cat. No. BAF-HM10R

## Description

<b>Source</b>	Recombinant Human BAFFR/TNFRSF13C Protein is expressed from HEK293 with His tag at the C-Terminus. It contains Ser7-Ala71.
<b>Accession</b>	Q96RJ3-1
<b>Molecular Weight</b>	The protein has a predicted MW of 7.6 kDa. Due to glycosylation, the protein migrates to 13-25 kDa based on Tris-Bis PAGE result.
<b>Endotoxin</b>	Less than 1EU per µg by the LAL method.
<b>Purity</b>	> 95% as determined by Tris-Bis PAGE

## Formulation and Storage

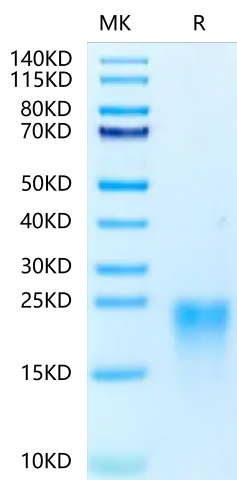
<b>Formulation</b>	Lyophilized from 0.22µm filtered solution in PBS (pH 7.4). Normally 8% trehalose is added as protectant before lyophilization.
<b>Reconstitution</b>	Centrifuge the tube before opening. Reconstituting to a concentration more than 100 µg/ml is recommended. Dissolve the lyophilized protein in distilled water.
<b>Storage</b>	-20 to -80°C for 12 months as supplied from date of receipt. -20 to -80°C for 3-6 months in unopened state after reconstitution. 2-8°C for 2-7 days after reconstitution. Recommend to aliquot the protein into smaller quantities for optimal storage. Please minimize freeze-thaw cycles.

## Background

BAFF binds to three TNF receptor superfamily members: B-cell maturation antigen (BCMA/TNFRSF17), transmembrane activator and calcium-modulator and cyclophilin ligand interactor (TACI/TNFRSF13B) and BAFF receptor (BAFF R/BR3/TNFRSF13C). These receptors are type III transmembrane proteins that lack a signal peptide. Whereas TACI and BCMA bind BAFF and another TNF superfamily ligand, APRIL (a proliferation-inducing ligand), BAFF R selectively binds BAFF.

## Assay Data

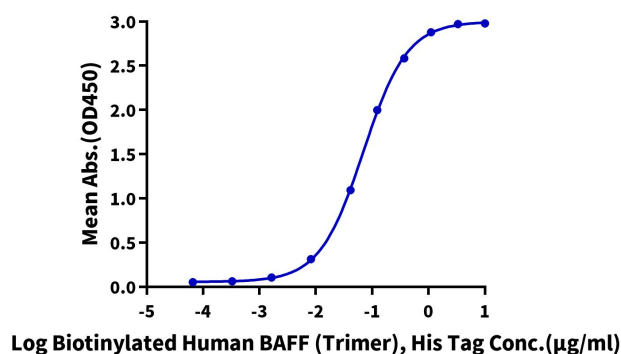
### Tris-Bis PAGE



Human BAFFR on Tris-Bis PAGE under reduced conditions. The purity is greater than 95%.

### ELISA Data

**Human BAFFR, His Tag ELISA**  
0.2µg Human BAFFR, His Tag Per Well



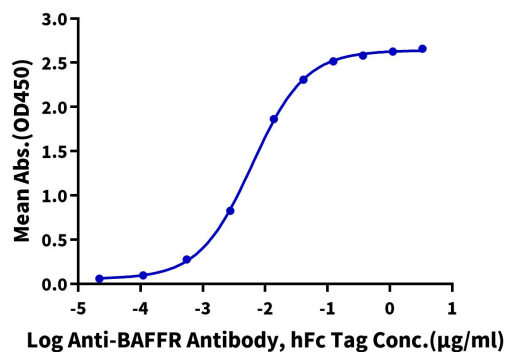
Immobilized Human BAFFR, His Tag at 2µg/ml (100µl/well) on the plate. Dose response curve for Biotinylated Human BAFF (Trimer) , His Tag with the EC50 of 69.9ng/ml determined by ELISA (QC Test).

Assay Data

ELISA Data

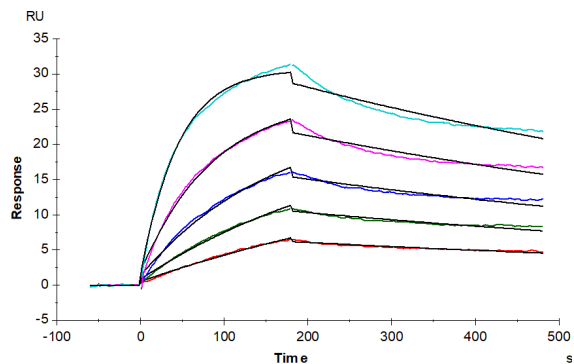
Human BAFFR, His Tag ELISA

0.05µg Human BAFFR, His Tag Per Well



Immobilized Human BAFFR, His Tag at 0.5µg/ml (100µl/Well). Dose response curve for Anti-BAFFR Antibody, hFc Tag with the EC50 of 6.2ng/ml determined by ELISA.

SPR Data



Human BAFFR, His Tag captured on CM5 Chip via anti-his antibody can bind Human BAFF Trimer, hFc-Flag Tag with an affinity constant of 1.21 nM as determined in SPR assay (Biacore T200).